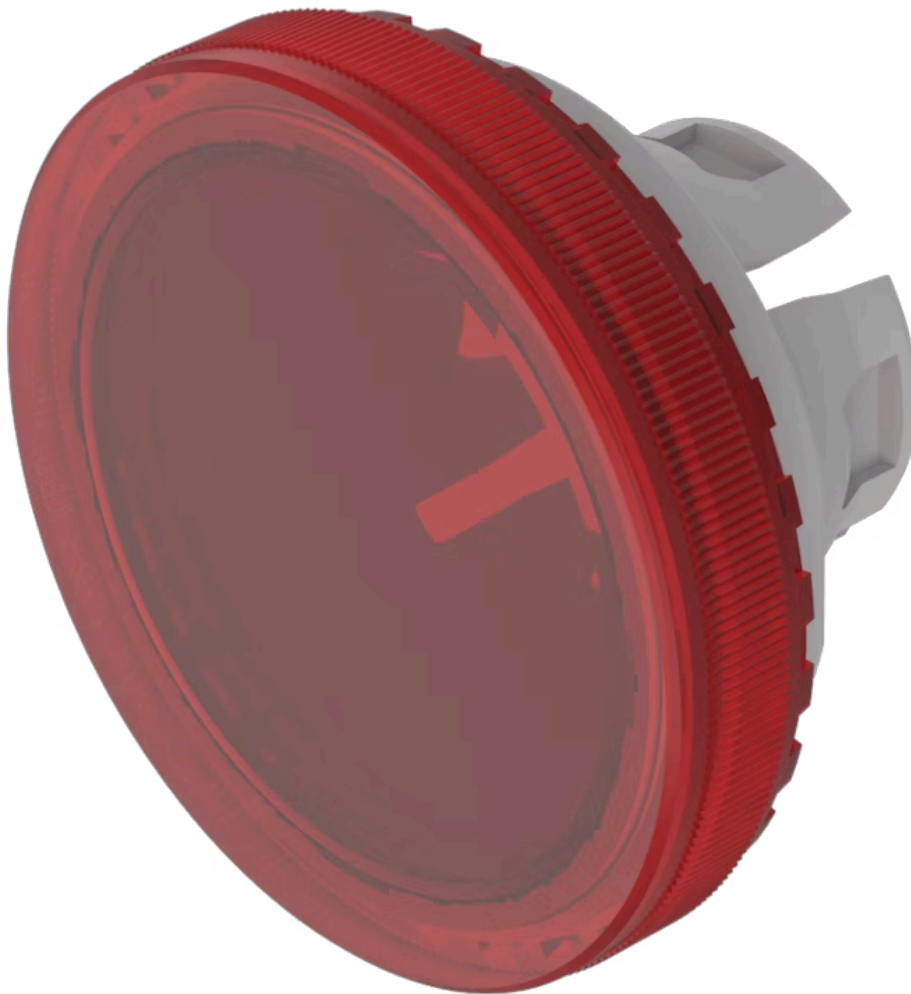


Lens

84-
7111.200



<https://www.eao.com/p/84-7111.200>

Your product:



84-7111.200 Lens

FRONT

Front form: Round

OPERATING-/INDICATION PART

Lens colour: Red

Lens material: Plastic

Lens illumination: Illuminated

Lens shape: Flush

Lens optics: transparent

Lens type: Level with front bezel

Symbol: No Symbol

Shape of illumination: Front

MECHANICAL CHARACTERISTIC

Weight: 0.001 kg

CERTIFICATE

REACH: REACH compliant

RoHS: RoHS compliant

OTHER

Short Description: Lens, Ø 19.7 mm, Illuminated, No Symbol, Red, Flush, Plastic

Dimension: Ø 19.7 mm

Description component:

Material lens: Plastic as per UL94 V2