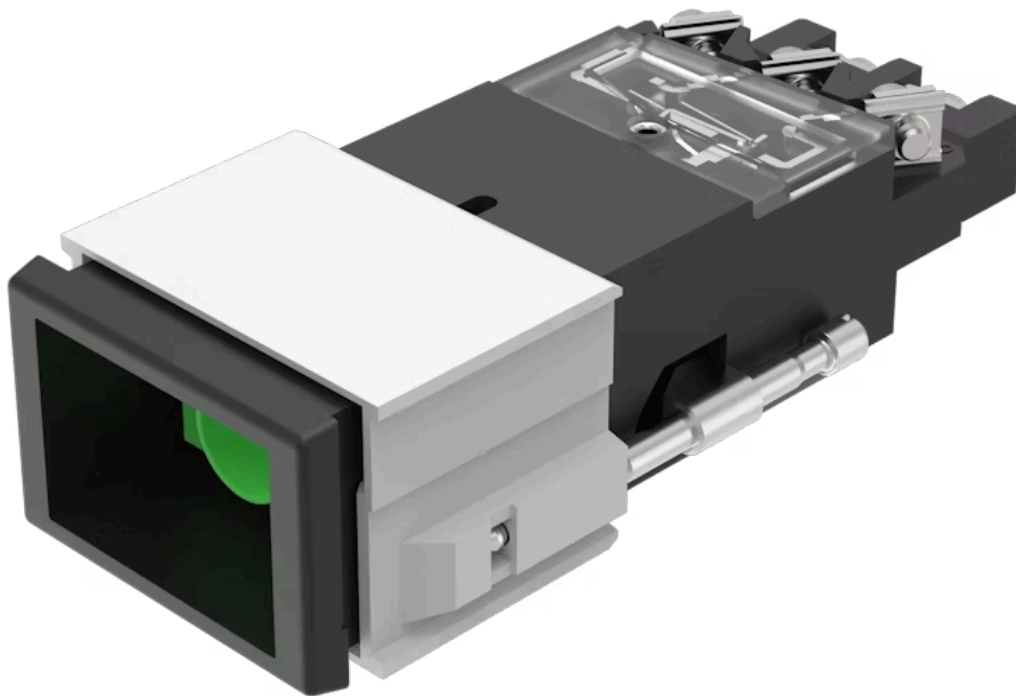


Actuator

02-
692.011



<https://www.eao.com/p/02-692.011>

Your product:



02-692.011 Actuator

FRONT

Front form:	Rectangular
Front bezel colour:	Black
Front bezel material:	Plastic

MOUNTING

Design:	Flush
Mounting cut-out:	21.2 mm x 29.2 mm
Mounting type:	Panel mounting

ELECTRICAL CHARACTERISTICS

Switching voltage and switching current:	according to UL 250 VAC, 10 A according to IEC 60947-5-1 AC-12: 400 V, 10 A AC-15: 250 V, 8 A DC-13: 60 V, 1 A	AC-15: 400 V, 6 A DC-13: 110 V, 0.4 A DC-13: 24 V, 3 A
---	---	--

Contacts:	2 C
Rated insulation voltage U_i:	400 VAC/440 VDC according to IEC 60947-5-1
Switching rating:	400 V @ 10 A
Standards:	The switches comply with the "Standards for low-voltage switching devices" EN IEC 60947-5-1
Thermal current I_{th}:	10 A

MECHANICAL CHARACTERISTIC

Terminal:	Screw terminal
Contact material:	Silver

Switching action:	Rest (a) - Momentary
Switching system:	Snap-action switching element
Switching system:	1 or 2 self-cleaning snap action switching elements. 1 or 2 double-throw contacts.
Switching positions:	2 positions
Switching angle:	90° right
Mechanical lifetime:	2 Mil. cycles of operation
Operating force:	6 ... 12 N
Tightening torque:	Fixing nut max. 0.2 Nm, Screw terminal 0.8 Nm
Terminal details 1:	Max. wire cross-section 2 mm x 2.5 mm ² Max. wire cross-section of stranded cable 2 x 1.5 mm ²
Weight:	0.001 kg

AMBIENT CONDITION

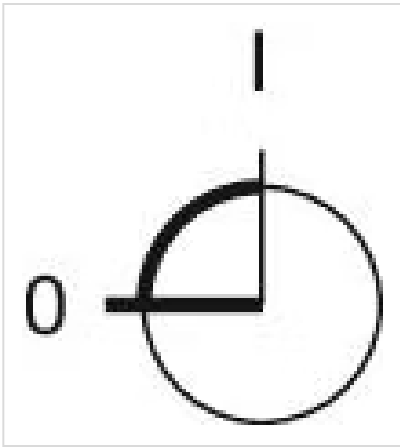
IP Protection:	IP40 front side, IP65 with spray cover, according to IEC 60529
Operating temperature:	- 25 °C ... + 55 °C, mounted as a block, make sure the heat can escape freely
Storage temperature:	- 30 °C ... + 85 °C
Shock resistance:	15 g for 11 ms, according to IEC 60068-2-27
Vibration resistance:	10 g at 10 Hz...2000 Hz, amplitude 1.0 mm, according to IEC 60068-2-6

CERTIFICATE

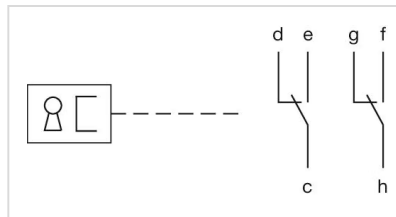
Approbations:	CB (IEC 60947-5-1), CENELEC CCA-NTR (EN 60947-5-1), CSA, DNV, SEV, UL
Conformities:	CE, UKCA, 2011 / 65 / EC (RoHS), 2014 / 35 / EU (LVD)
REACH:	REACH compliant
RoHS:	RoHS compliant

OTHER

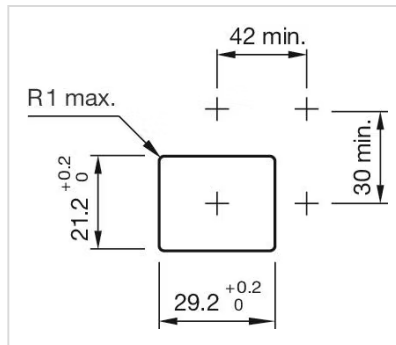
Short Description:	Actuator, 21.2 mm x 29.2 mm, Rectangular, Black, Plastic, 2 C, Rest (a) - Momentary, Screw terminal
Product attributes:	A = lockable, non-actuated or actuated
Switching positions:	



Wiring diagrams:



Mounting cut-outs:



Dimension drawings:

