

E-stop protective shroud

84-906



<https://www.eao.com/component/84-906/en/estop...>

Your product:



84-906 E-stop protective shroud

FRONT

Colour: Yellow

ELECTRICAL CHARACTERISTICS

Forward voltage:

MECHANICAL CHARACTERISTICS

Weight: 0 kg

AMBIENT CONDITION

IP front protection: IP65

OTHER

Short Description: E-stop protective shroud, Ø 50 mm, Plastic, Yellow

Titel Accessory: E-stop protective shroud

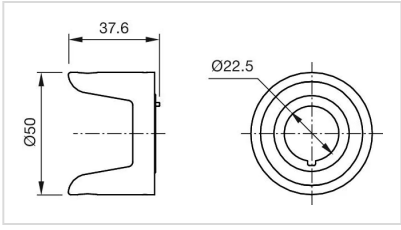
Dimension: Ø 50 mm

Material: Plastic

Hints: Front panel thickness 1 ... 3 mm
With anti-twist device
When using a protective shroud the e-stop or stop-switch has to be turned by 180° to be mounted. See dimensional drawing
The protection shroud Part No. 84-909 is not suitable for a proper use of emergency-stop. It can obstruct a spontaneous operation of the emergency-stop switch
This shroud Part No. 84-906 is not compliant to EN ISO 13850. There are no restrictions when combined with stop switches.

Colour RAL: 1003 RAL

Dimension drawings:



for Part No. 84-906