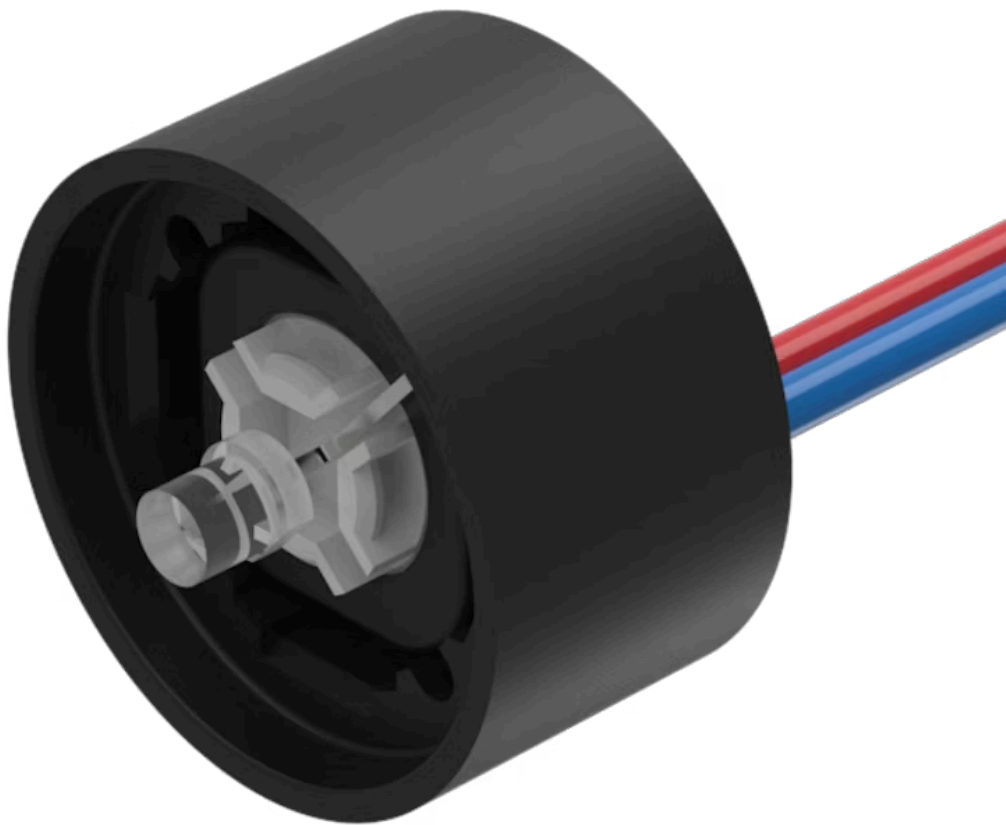


Illumination element

84-8005.8640



<https://www.eao.com/component/84-8005.8640/en...>

Your product:



84-8005.8640 Illumination element

OPERATING-/INDICATION PART

Illumination colour: Red / Green

ELECTRICAL CHARACTERISTICS

Operating voltage: 24 V AC/DC $\pm 10\%$

MECHANICAL CHARACTERISTICS

Terminal: Flat ribbon cable

Weight: 0.007 kg

AMBIENT CONDITION

IP Protection: IP67

CERTIFICATE

REACH: REACH compliant

RoHS: RoHS compliant

OTHER

Short Description: Illumination element, Red / Green, Bi-colour-LED, 24 V AC/DC $\pm 10\%$, Flat ribbon cable

Kind of illumination: Bi-colour-LED

Hints: LED and built-in resistor included
Standard version: Cable length 300 mm
Other options on request: Customisation of cable and connectors, rear side fully sealed (IP 67)
Best illumination level will be reached with aluminium lens with spot, Part No. 84-7215.x00 and 84-7211.x00

Protection degree (rear side): IP 40, upgrade to IP 67 with plug Part No. 84-900 possible. With applications where strong vibrations occur, the plugs may become loose
Cable connection IP 67, rear side fully sealed. The illumination element of the cable version cannot be disconnected from the actuator any longer
Luminosity and wave length variations caused by LED manufacturing processes may cause slight differences regarding the illumination. The customer has to decide what resistor shall be used to the LED

Wiring diagrams:

