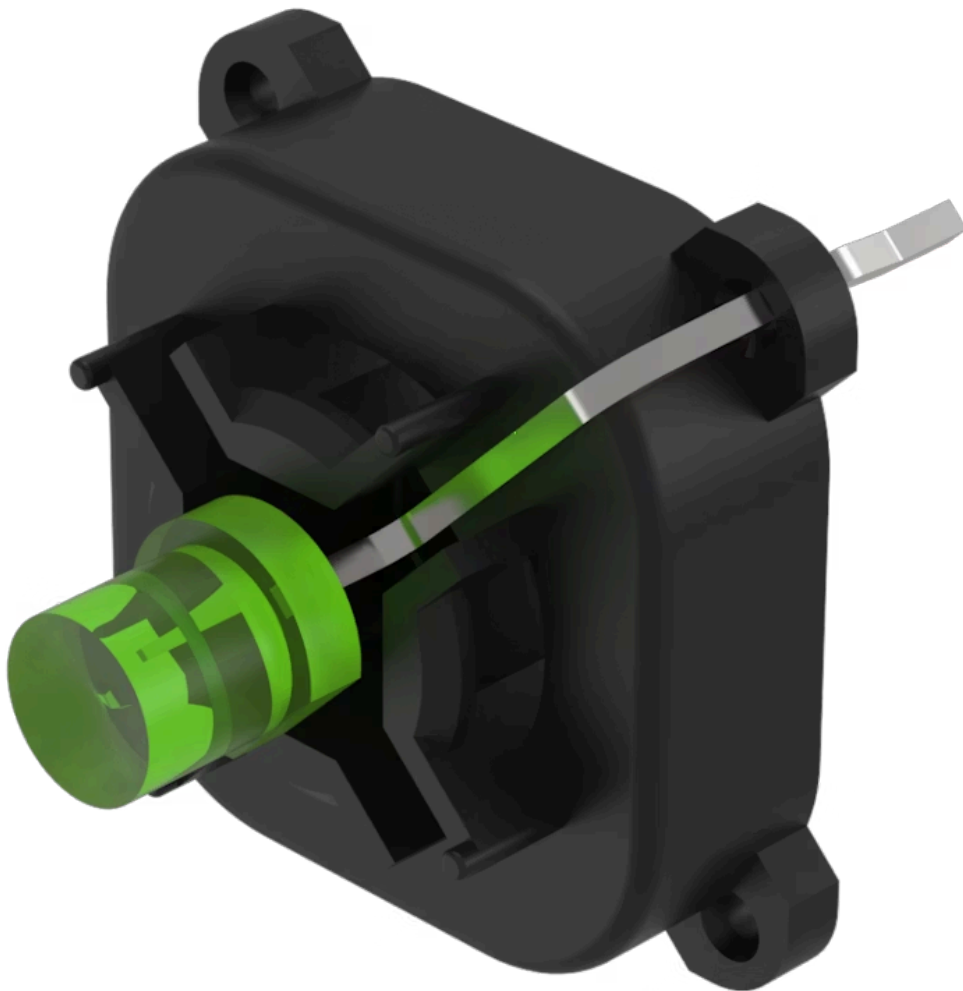


# Indicator element

70-820.5S



<https://www.eao.com/component/70-820.5S/en/in...>

Your product:

---



## 70-820.5S Indicator element

### OPERATING-/INDICATION PART

**Illumination colour:** Green

### ELECTRICAL CHARACTERISTICS

**Operating voltage:** 3 DC

**Lumi. Intensity:** 650 mcd

### MECHANICAL CHARACTERISTICS

**Terminal:** PCB terminal

**Weight:** 0.001 kg

### CERTIFICATE

**REACH:** REACH compliant

**RoHS:** RoHS compliant

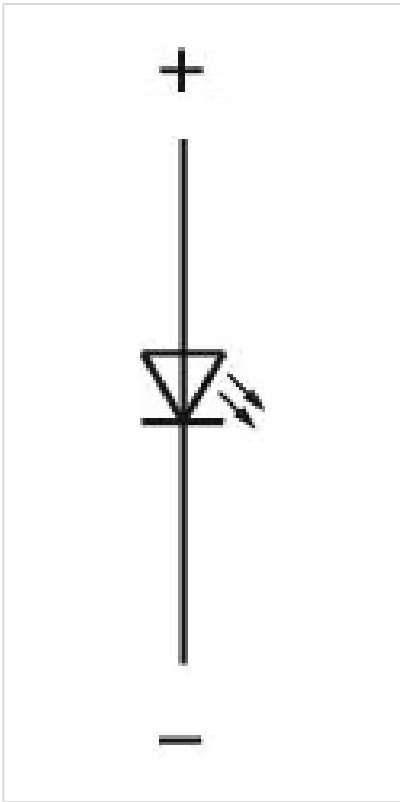
### OTHER

**Short Description:** Indicator element, Green, Single-LED, 3 DC, PCB terminal

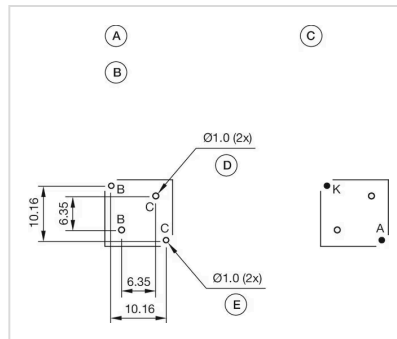
**Kind of illumination:** Single-LED

**Hints:** The customer has to decide what series resistor shall be used to the LED

**Wiring diagrams:**



**Component layouts:**



- A = Illumination element
- B = Single LED
- C = Drilling plan (component side)
- D = Hole for centering pins non-metallic
- E = Hole for LED

**Dimension drawings:**

