

# Switching element

70-100.0



<https://www.eao.com/component/70-100.0/en/swi...>

Your product:

---



## 70-100.0 Switching element

### ELECTRICAL CHARACTERISTICS

<b>Switching voltage and switching current:</b>	max. 12 VDC, 50 mA min. 1 VDC, 10 mA
<b>Contacts:</b>	1 NO
<b>Switching rating:</b>	42 V @ 0,1 A
<b>Electrical lifetime:</b>	500 000 cycles of operation at 5VDC, 1mA
<b>Electric strength:</b>	250 VAC, 1 minute

### MECHANICAL CHARACTERISTICS

<b>Terminal:</b>	PCB terminal
<b>Contact material:</b>	Silver
<b>Switching action:</b>	Momentary
<b>Switching system:</b>	Short-travel element
<b>Switching system:</b>	Short-travel snap-action switching system with two independent contact points and tactile operation Guarantees reliable switching even of very light loads. 1 normally open contact
<b>Mechanical lifetime:</b>	500 000 cycles of operation with decor foil
<b>Operating force:</b>	5 N $\pm$ 2 N with decor foil, >50 N max. on button centre with test plunger, according to DIN 42115
<b>Operating Travel:</b>	0.3 mm
<b>Weight:</b>	0.001 kg

### AMBIENT CONDITION

<b>IP Protection:</b>	IP65 (front side with overlay foil)
<b>Operating temperature:</b>	- 20 °C ... + 70 °C

**Storage temperature:** - 30 °C ... + 85 °C

### CERTIFICATE

**Conformities:** CE, UKCA, 2011 / 65 / EC (RoHS)

**REACH:** REACH compliant

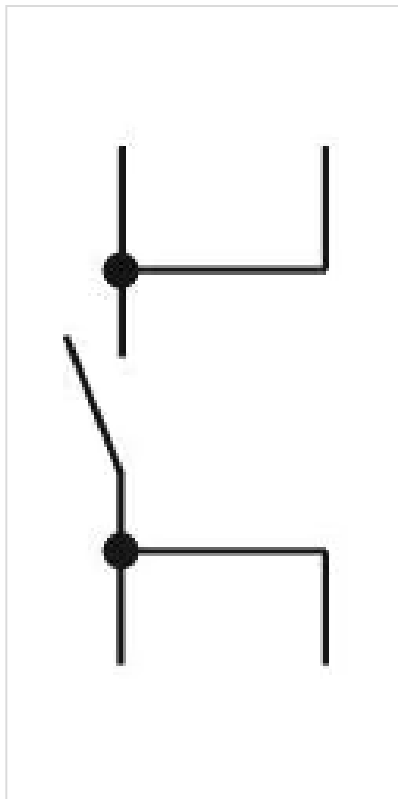
**RoHS:** RoHS compliant

### OTHER

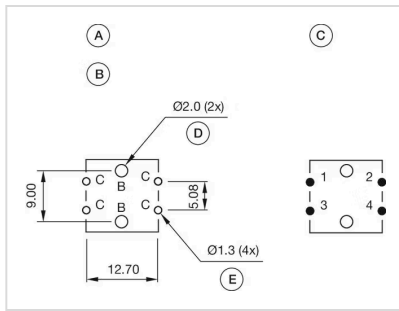
**Short Description:** Switching element, Short-travel element, 42 V @ 0,1 A, Silver, 1 NO, PCB terminal

**Product attributes:** Operation without spacing cap

**Wiring diagrams:**



**Component layouts:**



- A = Switching element without illumination with
- B = Drilling plan (component side)
- C = Occupancy plan (component side)
- D = Hole for centering pins non-metallic
- E = Hole for switching element

**Dimension drawings:**

