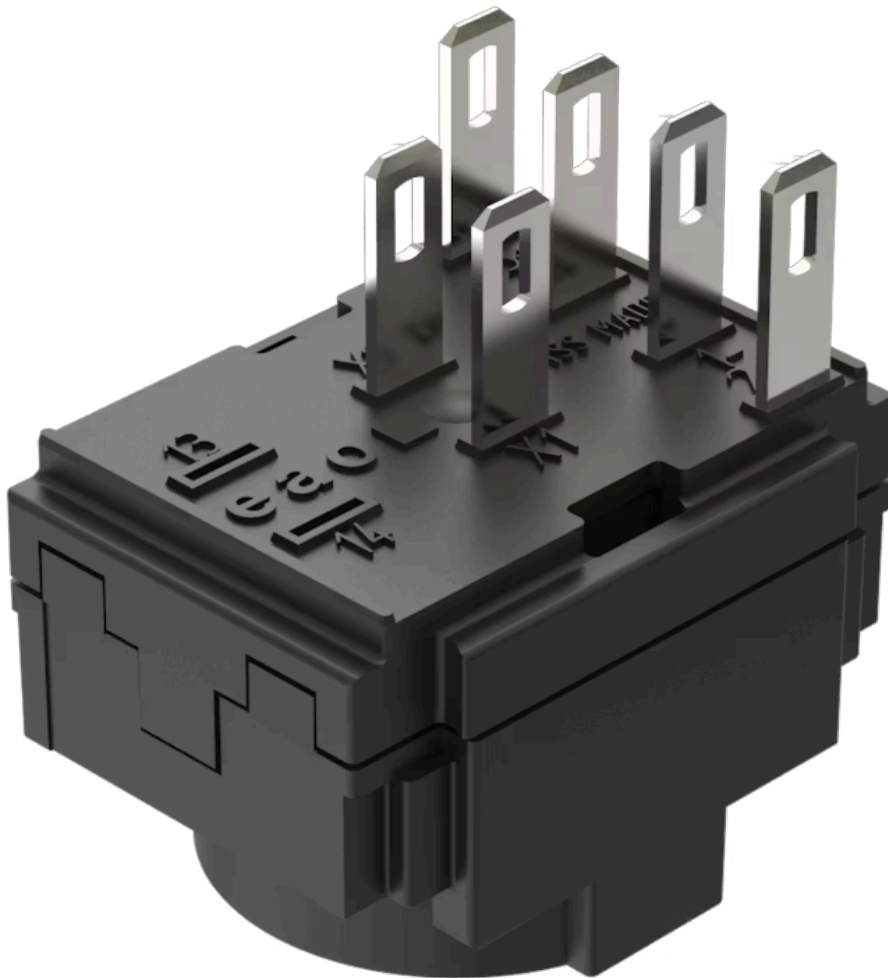


Switching element

61-8574.12



<https://www.eao.com/component/61-8574.12/en/s...>

Your product:



61-8574.12 Switching element

ELECTRICAL CHARACTERISTICS

Switching voltage and switching current:

Switch rating AC with silver contact or silver contact with gold plating	
Service category AC-15 according to EN IEC 60947-5-1	
Voltage	125 VAC
Current	2.5 A
Switch rating DC with silver contact or silver contact with gold plating	
Service category DC-13 according to EN IEC 60947-5-1	
Voltage	250 VDC
Current	0.15 A

Contacts:

1 NC / 1 NO

Rated Operational Voltage U_e :

250 VAC/DC according to EN IEC 60947-1

Rated impulse withstand voltage U_{imp} :

4 kV, according to EN/IEC 60947-5-1

Rated insulation voltage U_i :

320 VAC, according to EN / IEC 60947-5-1

Recommended minimum operational data:

Voltage	20 VAC/DC
Current	100 mA

Switching rating:

250 V AC/DC

Electrical lifetime:

≥50 000 cycles of operation at 250VAC, 2A, $\cos\phi$ 0.95,

Electric strength:

2500 VAC, 50 Hz, 1 minute, as per DIN / IEC 60512-2 between all terminals and earth

Overvoltage category:

III, according to EN / IEC 60947-5-1

Pollution degree:

2, according to EN IEC 60947-1

Protection class:

II, according to EN / IEC 61058-1

Standards:

The switches comply with the "Standards for low-voltage switching devices" EN IEC 61058-1, EN IEC 60947-5-1

Thermal current I_{th} :

5 A

MECHANICAL CHARACTERISTICS

Terminal:	Plug-in terminal, 2.8 x 0.5 mm
Contact material:	Silver
Switching system:	Snap-action switching element
Switching system:	Self-cleaning, double-break snap-action switching system with contact opening width 2mm x 0.5mm (switch with small contact opening width as per EN IEC 61058-1). The switching elements are optionally equipped with the following switching functions: One to three normally open (NO) or normally closed (NC), or any combination of NO and NC plus connections for T1 3/4 LED or lamp. The number of switching elements cannot exceed three. The switching elements provided for the 3-position switch actuators are equipped with max. 2 NC or 2 NO or any combination. The number of switching elements cannot exceed two.
Switching positions:	3 positions
Wire cross section:	1 wire flexible: 0.5 ... 0.75 mm ² 1 wire super flexible: 0.5 mm ² 1 wire rigid: 0.5 ... 1.5 mm ² 2 wires rigid: 0.75 mm ² 2 wires flexible: 0.5 mm ²
Weight:	0.005 kg

AMBIENT CONDITION

Operating temperature:	- 25 °C ... + 55 °C
Storage temperature:	- 40 °C ... + 85 °C
Shock resistance:	Max. 100 m / s ² , pulse width, 3-axis (sinusoidal EN IEC 60068-2-27)
Vibration resistance:	Max. 100 m / s ² from 10 Hz ... 500 Hz, (sinusoidal EN IEC 60068-2-6)
Climate resistance:	Damp heat, cyclic: 96 hours, + 25 °C/97 %, + 55 °C/93 % relative humidity, as per EN IEC 60068-2-30 Damp heat, steady: 56 days, + 40 °C/93 % relative humidity, according to EN IEC 60068-2-78 Rapid change of temperature: 100 cycles, - 40 °C ... + 80 °C, as per EN / IEC 60068-2-14

CERTIFICATE

Approbations:	CB (IEC 61058-1), CQC, CSA, DNV, ENEC (EN 61058-1), UL, VDE
Conformities:	CE, UKCA, 2011 / 65 / EC (RoHS), 2014 / 35 / EU (LVD)
REACH:	REACH compliant
RoHS:	RoHS compliant

OTHER

Short Description:	Switching element, Snap-action switching element, 250 V AC/DC, Silver, 1 NC / 1 NO, Plug-in terminal, 2.8 x 0.5 mm
Material:	Plastic, according to UL 94 V0

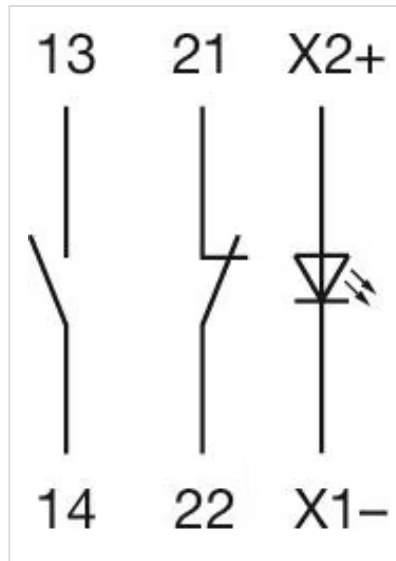
Product attributes:

With lamp terminal

Hints:

With lamp terminal

Wiring diagrams:



Component layouts:

