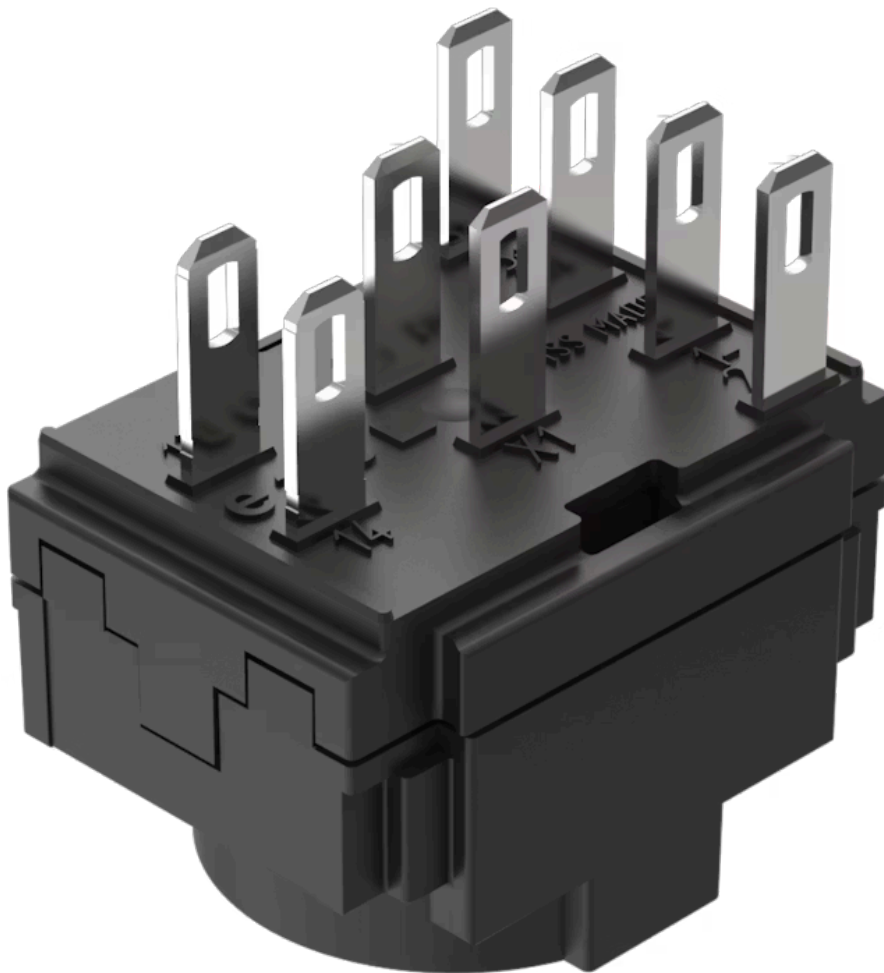


# Switching element

61-8430.12



<https://www.eao.com/component/61-8430.12/en/s...>

Your product:



## 61-8430.12 Switching element

### ELECTRICAL CHARACTERISTICS

#### Switching voltage and switching current:

Switch rating AC with silver contact or silver contact with gold plating	
Service category AC-15	
according to EN IEC 60947-5-1	
Voltage	125 VAC
Current	2.5 A
Switch rating DC with silver contact or silver contact with gold plating	
Service category DC-13	
according to EN IEC 60947-5-1	
Voltage	250 VDC
Current	0.15 A

#### Contacts:

3 NO

#### Rated Operational Voltage $U_e$ :

150 VAC/DC (Switching elements with 3 contacts)

#### Rated impulse withstand voltage $U_{imp}$ :

4 kV, according to EN/IEC 60947-5-1

#### Rated insulation voltage $U_i$ :

320 VAC, according to EN / IEC 60947-5-1

#### Recommended minimum operational data:

Voltage	20 VAC/DC
Current	100 mA

#### Switching rating:

150 V AC/DC @ 3 A

#### Electrical lifetime:

≥50 000 cycles of operation at 250VAC, 2A,  $\cos\phi$  0.95,

#### Electric strength:

2500 VAC, 50 Hz, 1 minute, as per DIN / IEC 60512-2 between all terminals and earth

#### Overvoltage category:

III, according to EN / IEC 60947-5-1

#### Pollution degree:

2, according to EN IEC 60947-1

#### Protection class:

II, according to EN / IEC 61058-1

#### Standards:

The switches comply with the "Standards for low-voltage switching devices" EN IEC 61058-1, EN IEC 60947-5-1

#### Thermal current $I_{th}$ :

3 A

### MECHANICAL CHARACTERISTICS

<b>Terminal:</b>	Plug-in terminal, 2.8 x 0.5 mm
<b>Contact material:</b>	Silver
<b>Switching system:</b>	Snap-action switching element
<b>Switching system:</b>	Self-cleaning, double-break snap-action switching system with contact opening width 2mm x 0.5mm (switch with small contact opening width as per EN IEC 61058-1). The switching elements are optionally equipped with the following switching functions: One to three normally open (NO) or normally closed (NC), or any combination of NO and NC plus connections for T1 3/4 LED or lamp. The number of switching elements cannot exceed three. The switching elements provided for the 3-position switch actuators are equipped with max. 2 NC or 2 NO or any combination. The number of switching elements cannot exceed two.
<b>Switching positions:</b>	2 positions
<b>Wire cross section:</b>	1 wire flexible: 0.5 ... 0.75 mm <sup>2</sup> 1 wire super flexible: 0.5 mm <sup>2</sup> 1 wire rigid: 0.5 ... 1.5 mm <sup>2</sup> 2 wires rigid: 0.75 mm <sup>2</sup> 2 wires flexible: 0.5 mm <sup>2</sup>
<b>Weight:</b>	0.007 kg

#### AMBIENT CONDITION

<b>Operating temperature:</b>	- 25 °C ... + 55 °C
<b>Storage temperature:</b>	- 40 °C ... + 85 °C
<b>Shock resistance:</b>	Max. 100 m / s <sup>2</sup> , pulse width, 3-axis (sinusoidal EN IEC 60068-2-27)
<b>Vibration resistance:</b>	Max. 100 m / s <sup>2</sup> from 10 Hz ... 500 Hz, (sinusoidal EN IEC 60068-2-6)
<b>Climate resistance:</b>	Damp heat, cyclic: 96 hours, + 25 °C/97 %, + 55 °C/93 % relative humidity, as per EN IEC 60068-2-30 Damp heat, steady: 56 days, + 40 °C/93 % relative humidity, according to EN IEC 60068-2-78 Rapid change of temperature: 100 cycles, - 40 °C ... + 80 °C, as per EN / IEC 60068-2-14

#### CERTIFICATE

<b>Approbations:</b>	CB (IEC 61058-1), CQC, CSA, DNV, ENEC (EN 61058-1), UL, VDE
<b>Conformities:</b>	CE, UKCA, 2011 / 65 / EC (RoHS), 2014 / 35 / EU (LVD)
<b>REACH:</b>	REACH compliant
<b>RoHS:</b>	RoHS compliant

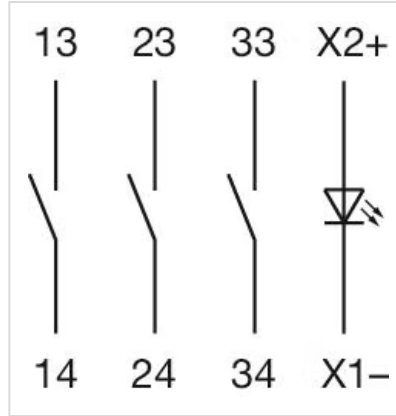
#### OTHER

<b>Short Description:</b>	Switching element, Snap-action switching element, 150 V AC/DC @ 3 A, Silver, 3 NO, Plug-in terminal, 2.8 x 0.5 mm
<b>Material:</b>	Plastic, according to UL 94 V0

Hints:

With lamp terminal

Wiring diagrams:



Component layouts:

