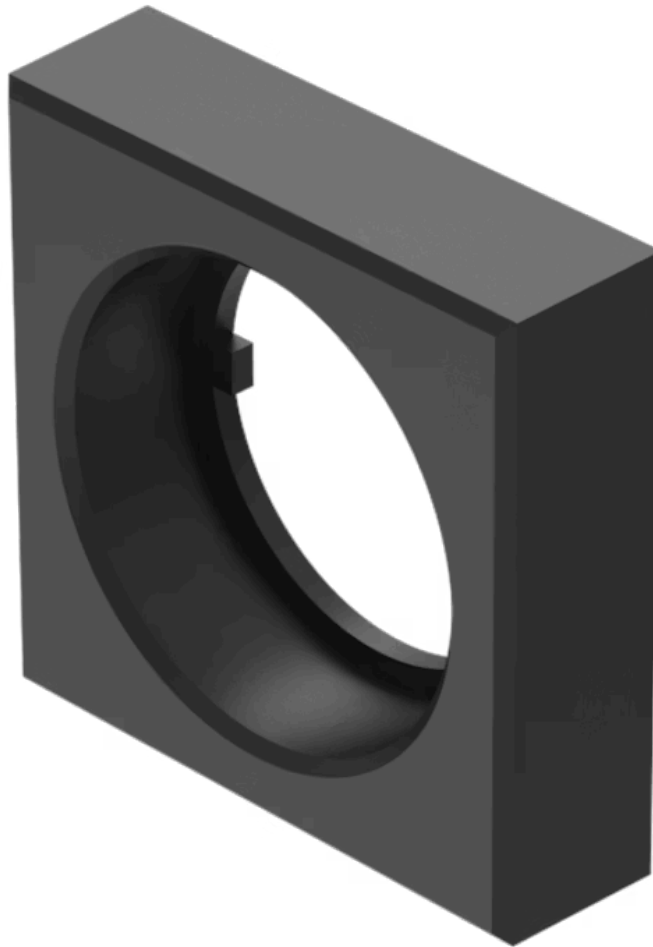


# Front bezel for Selector switch

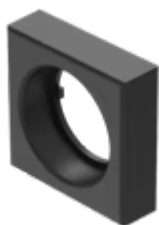
52-952.0



<https://www.eao.com/component/52-952.0/en/fro...>

Your product:

---



## 52-952.0

### Front bezel for Selector switch

#### FRONT

<b>Front dimension:</b>	26 mm x 26 mm
<b>Front form:</b>	Square
<b>Front bezel colour:</b>	Black
<b>Front bezel material:</b>	Plastic, according to UL 94 V0

#### MECHANICAL CHARACTERISTICS

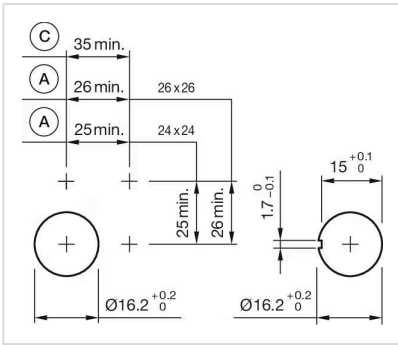
<b>Weight:</b>	0.003 kg
----------------	----------

#### CERTIFICATE

<b>REACH:</b>	REACH compliant
<b>RoHS:</b>	RoHS compliant

#### OTHER

<b>Short Description:</b>	Front bezel for Selector switch, 26 mm x 26 mm, Black, Plastic, according to UL 94 V0
<b>Dimension:</b>	26 mm x 26 mm
<b>Mounting cut-outs:</b>	



A = Solder/Plug-in terminal 2.8 mm x 0.5 mm  
 C = Screw terminal