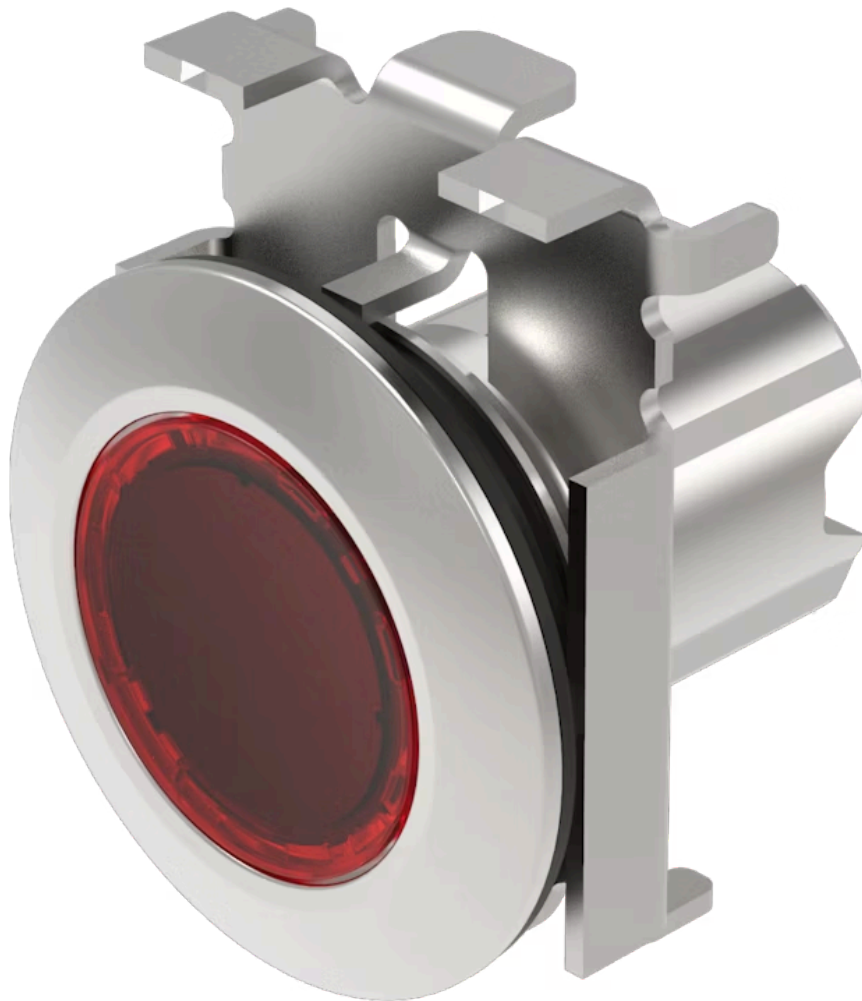


# Actuator

45-  
2T07.4FE0.000



<https://www.eao.com/component/45-2T07.4FE0.00...>

Your product:

---



## 45-2T07.4FE0.000 Actuator

### FRONT

<b>Front dimension:</b>	Ø 38 mm
<b>Front form:</b>	Round
<b>Front bezel colour:</b>	Sand grey
<b>Front bezel material:</b>	Metal

### MOUNTING

<b>Design:</b>	Raised
<b>Mounting cut-out:</b>	Ø 22.3 mm
<b>Mounting type:</b>	Panel mounting

### OPERATING-/INDICATION PART

<b>Lens cap colour:</b>	Red
<b>Lens cap material:</b>	Plastic
<b>Lens cap shape:</b>	flush
<b>Lens cap optical effect:</b>	transparent
<b>Illumination colour:</b>	Red

### MECHANICAL CHARACTERISTICS

<b>Weight:</b>	0.07 kg
----------------	---------

### AMBIENT CONDITION

<b>IP front protection:</b>	IP66, IP67, IP69K
-----------------------------	-------------------

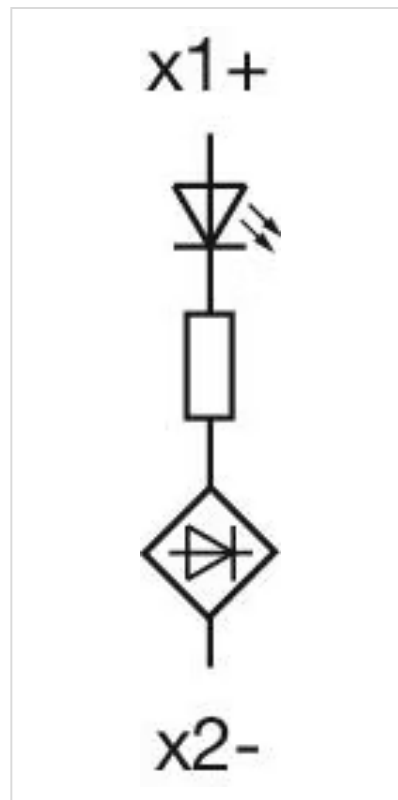
<b>Operating temperature:</b>	- 25 °C ... + 70 °C
<b>Storage temperature:</b>	- 40 °C ... + 80 °C
<b>Shock resistance:</b>	According to IEC 60068-2-27: Sinusoidal half-wave 50 g / 11 ms
<b>Vibration resistance:</b>	According to IEC 60068-2-6: 2 ... 500 Hz: 5 g
<b>Climate resistance:</b>	During operation according to IEC 60721: 3K6, 3C3, 3S2, 3M6

### CERTIFICATE

<b>REACH:</b>	REACH compliant
<b>RoHS:</b>	RoHS compliant

### OTHER

<b>Short Description:</b>	Actuator, Ø 22.3 mm, Ø 38 mm, Round, Sand grey, Metal, IP66, IP67, IP69K, Red
<b>Housing material:</b>	Metal
<b>Hints:</b>	Front panel thickness 1 ... 6 mm
<b>Wiring diagrams:</b>	



**Dimension drawings:**

