

For other options, keypads, keyboards or custom configurations please contact EAO Switch directly.

Product Profile

The W.series mechanical tactile keyboards are designed to operate in hostile environments, making them ideal for applications in industrial and public areas.

Technical drawings see pages 102-103

- All metal construction (chromed Zamak keys and brushed stainless steel for the front plate)
- Laser engraving ensuring good and long term legibility
- High resistance to vandalism: up to 10J
- Anti pull-off keys
- Sealed against liquid penetration to IP67
- Top or back mounting
- PS2 or USB connection
- Environment: PS2, Win NT4, 98 SE, ME, 2000 PRO Pack II, XP Pro
- With or without pointing device: Standard or optical trackball and touchpad
- Available in different language layouts with standard or customized markings
- Possible internet dedicated keys - "www" and ".com"
- Internet and standard industrial versions available

Rugged mechanical keyboard



Alphanumeric keyboard, back mounting, 63 keys, layouts in English, German, French and US English internet version

Part No.	Layout	Output type
W.630KW.S10	English	PS2
W.630DW.S10	German	PS2
W.630FW.S10	French	PS2
W.630UW.S10	US English	PS2
W.630KW.U10	English	USB
W.630DW.U10	German	USB
W.630FW.U10	French	USB
W.630UW.U10	US English	USB
Contact EAO for industrial version		



Alphanumeric keyboard, top mounting, 63 keys, layouts in English, German, French and US English internet version

Part No.	Layout	Output type
W.630KW.S11	English	PS2
W.630DW.S11	German	PS2
W.630FW.S11	French	PS2
W.630UW.S11	US English	PS2
W.630KW.U11	English	USB
W.630DW.U11	German	USB
W.630FW.U11	French	USB
W.630UW.U11	US English	USB
Contact EAO for industrial version		

Rugged mechanical keyboard



Alphanumeric keyboard, stainless steel trackball, 2 clicks, back mounting, 65 keys, layouts English, German, French and US English internet version

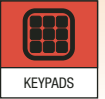
Part No.	Layout	Output type
W.65BKW.S10	English	PS2
W.65BDW.S10	German	PS2
W.65BFW.S10	French	PS2
W.65BUW.S10	US English	PS2
W.65BKW.U10	English	USB
W.65BDW.U10	German	USB
W.65BFW.U10	French	USB
W.65BUW.U10	US English	USB
Contact EAO for industrial version		



Alphanumeric keyboard, stainless steel trackball, 2 clicks, top mounting, 65 keys, layouts English, German, French and US English internet version

Part No.	Layout	Output type
W.65BKW.S11	English	PS2
W.65BDW.S11	German	PS2
W.65BFW.S11	French	PS2
W.65BUW.S11	US English	PS2
W.65BKW.U11	English	USB
W.65BDW.U11	German	USB
W.65BFW.U11	French	USB
W.65BUW.U11	US English	USB
Contact EAO for industrial version		

For other options, keypads or custom configurations please contact EAO Switch directly.



Product Profile

The W.series is a high quality, vandal resistant keypad range especially designed to meet the needs of banking markets, POS terminals, public environment applications and other industrial applications.

Technical drawings see pages 102-103

- High impact resistance up to 10J
- All metal construction (chromed Zamak keys and brushed stainless steel for the front plate)
- Anti pull-off keys
- IP67 sealing when mounted
- 4, 16 or 20 key versions
- Illuminated versions available
- Custom configurations, layouts, legends and illumination available
- Double-width keys available

Rugged keypad



Keypad with 4 blank keys



Keypad, 4 keys engraved with arrows and filled with black paint

Part No.	Contact terminals	Part No.	Contact terminals
W.04000.P01	Pin Header	W.0400X.038	Pin Header

Rugged keypad



Keypad, 4 yellow illuminated keys, A-D

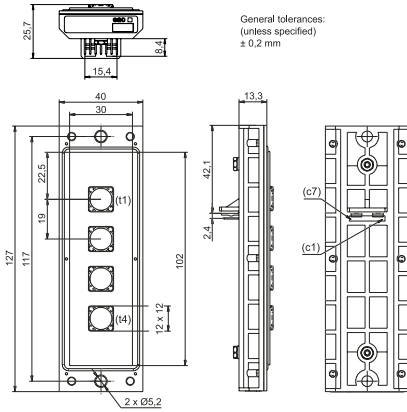


Customized keypad capabilities. Customization possible for layouts and key markings. For further details please contact your local sales office.

Part No.	Contact terminals	
W.0400X.016	Pin Header	Contact EAO Switch directly

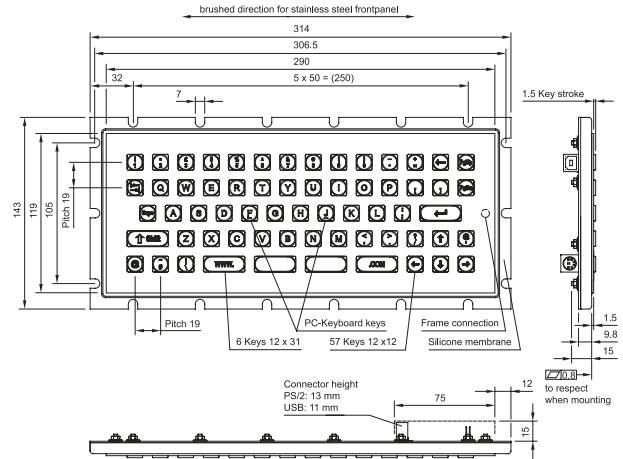
W.series Keypad

Keypad 4 Keys Blank, 4 Keys Arrows, 4 Keys Illuminated A-D



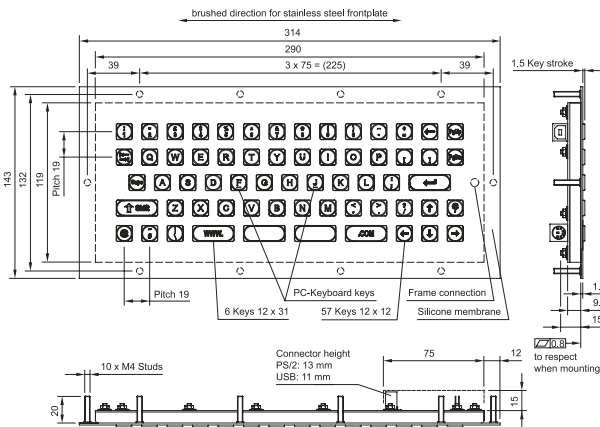
W.series Keyboard

Alphanumeric Mechanical 63 Keys Back Mount



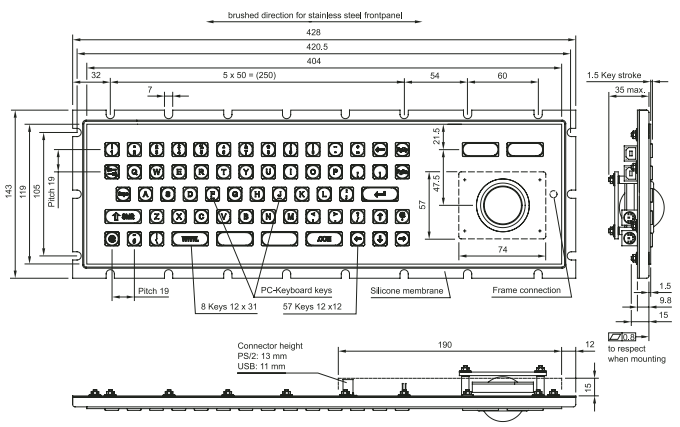
W.series Keyboard

Alphanumeric Mechanical 63 Keys Top Mount



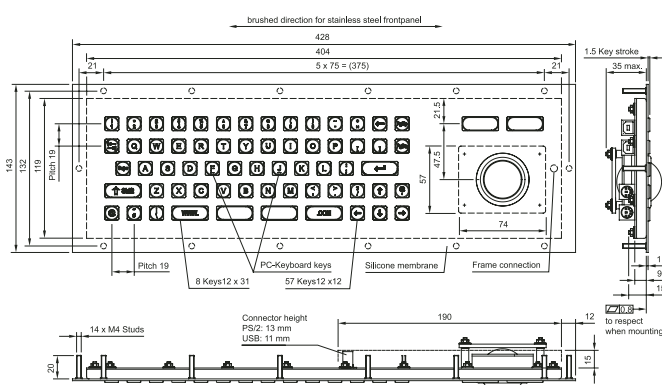
W.series Keyboard

Alphanumeric Mechanical 65 Keys Back Mount



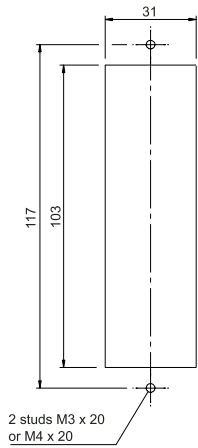
W.series Keyboard

Alphanumeric Mechanical 65 Keys Top Mount



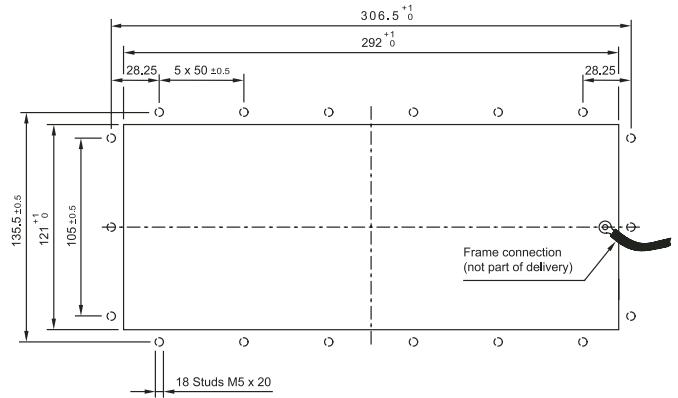
Wseries Keypad Cut-outs

1x4 keypad



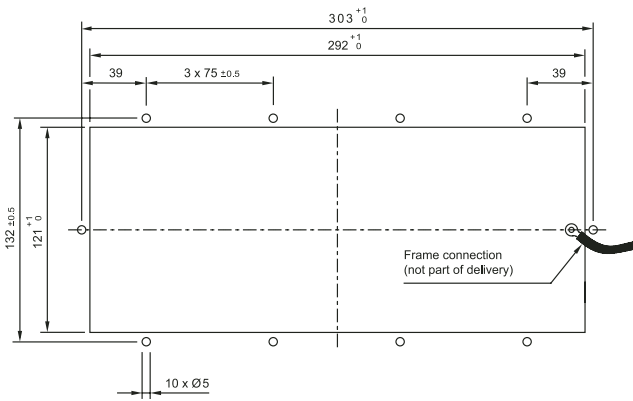
Wseries Keypad Cut-outs

Alphanumeric Mechanical 63 Keys Back Mount



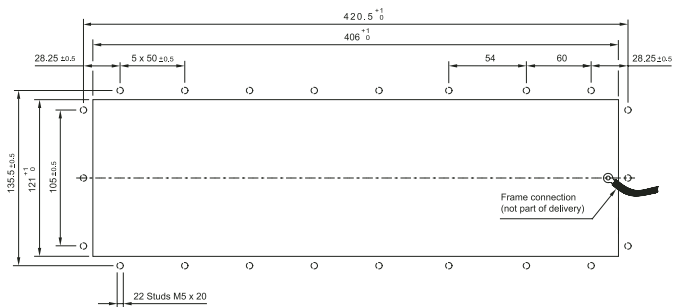
Wseries Keypad Cut-outs

Alphanumeric Mechanical 63 Keys Top Mount



Wseries Keypad Cut-outs

Alphanumeric Mechanical 65 keys Back Mount



Wseries Keypad Cut-outs

Alphanumeric Mechanical 65 keys Top Mount

